

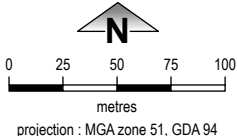
Junjuwa Layout Plan 1 - Living Area

Amendment 7



This Layout Plan does not constitute development approval. It is the responsibility of the developer to ensure that all relevant consents, approvals, licences and clearances are in place prior to commencing physical works on the site. Organisations responsible for such matters may include land owner, local government, incorporated community council, native title representative body, native title prescribed body corporate, Aboriginal Cultural Materials Committee, Environmental Protection Authority, state and federal government departments, and other relevant regulatory authorities. Go to the [PlanWA interactive planning map](#) to view Layout Plans with other spatial layers.

| Layout Plan 1 endorsement | |
|---------------------------|-------------------|
| Community | 24 February 2024 |
| Local Government | 15 July 2004 |
| Traditional Owners | - |
| WAPC | 8 April 2008 |
| Amendment 7 endorsement | |
| WAPC | 20 September 2024 |



Junjuwa Layout Plan 1 Background Report

© 2023 Western Australian Land Information Authority Location information data licensed from Western Australian Land Information Authority (WALIA) trading as Landgate. Copyright in the location information data remains with WALIA. WALIA does not warrant the accuracy or completeness of the location information data or its suitability for any particular purpose. Base information and aerial imagery supplied by the Western Australian Land Information Authority SLIP 1447-2023-1. Cadastre, October 2024. August 2023. Settlement layout lots are not derived from calculated dimensions. Map document : JunjuwaLP1_Amd7.aprx Produced by Data Analytics, Department of Planning, Lands & Heritage on behalf of the Western Australian Planning Commission. © Western Australian Planning Commission 2024

Land Use (see [Aboriginal Settlements Guideline](#))

| | |
|---------------------------------------|--|
| road reserve | road, essential service distribution network |
| residential | house, residential quarters |
| visitor camping | camping ground, traditional law and culture |
| community | child care premises, civic use, corrective institution, educational establishment, health care centre, worship building |
| open space | agriculture - extensive, essential service distribution network, traditional law and culture |
| rural | rural pursuit, agriculture - extensive, animal husbandry - intensive, agriculture - intensive, essential service distribution network |
| recreation | recreation, essential service distribution network |
| pedestrian access way | essential service distribution network, pedestrian access way |
| drinking water source protection area | any use permitted under the Drinking Water Source Protection Plan |
| waterway | agriculture - extensive, agriculture - intensive, traditional law and culture |
| commercial | art centre, caravan park, motel, office, service station, shop, tourism accommodation |
| industrial | fuel depot, industry, motor vehicle repair, storage, vehicle wrecking |
| public utility | electricity supply, essential service distribution network, drinking water supply, wastewater disposal, telecommunications, rubbish disposal |

Features

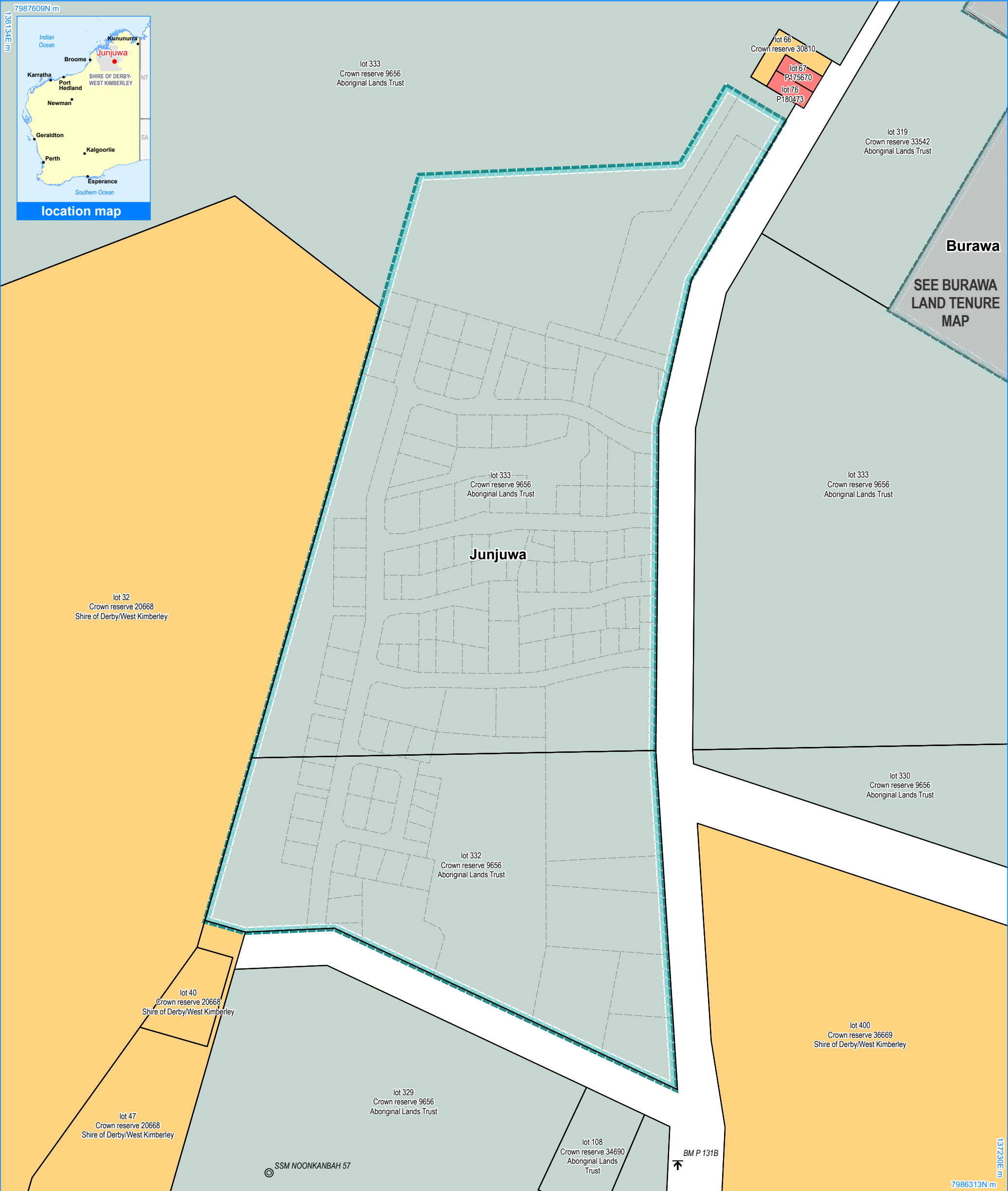
• bore

Land Administration

| | |
|--|--|
| | cadastre |
| | lodged cadastral |
| | recommended settlement zone |
| | settlement zone |
| | settlement layout (SL) lot & SL-lot number |

Exclusion Boundary

| | |
|--|--|
| | chlorine gas storage |
| | drinking water source wellhead protection zone |
| | industry |
| | no-go area |



Junjuwa Layout Plan 1 - Land Tenure

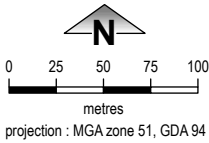
Amendment 7



This Layout Plan does not constitute development approval. It is the responsibility of the developer to ensure that all relevant consents, approvals, licences and clearances are in place prior to commencing physical works on the site. Organisations responsible for such matters may include land owner, local government, incorporated community council, native title representative body, native title prescribed body corporate, Aboriginal Cultural Materials Committee, Environmental Protection Authority, state and federal government departments, and other relevant regulatory authorities.

Go to the [PlanWA interactive planning map](#) to view Layout Plans with other spatial layers.

| Layout Plan 1 endorsement | |
|---------------------------|-------------------|
| Community | 24 February 2024 |
| Local Government | 15 July 2004 |
| Traditional Owners | - |
| WAPC | 8 April 2008 |
| Amendment 7 endorsement | |
| WAPC | 20 September 2024 |



© 2023 Western Australian Land Information Authority Location information data licensed from Western Australian Land Information Authority (WALIA) trading as Landgate. Copyright in the location information data remains with WALIA. WALIA does not warrant the accuracy or completeness of the location information data or its suitability for any particular purpose. Base information and aerial imagery supplied by the Western Australian Land Information Authority SLIP 1447-2023-1. Cadastre, October 2024.

Settlement layout lots are not derived from calculated dimensions.

Map document : JunjuwaLP1_Amd7.aprx
Produced by Data Analytics, Department of Planning, Lands & Heritage on behalf of the Western Australian Planning Commission.
© Western Australian Planning Commission 2024

Land Tenure

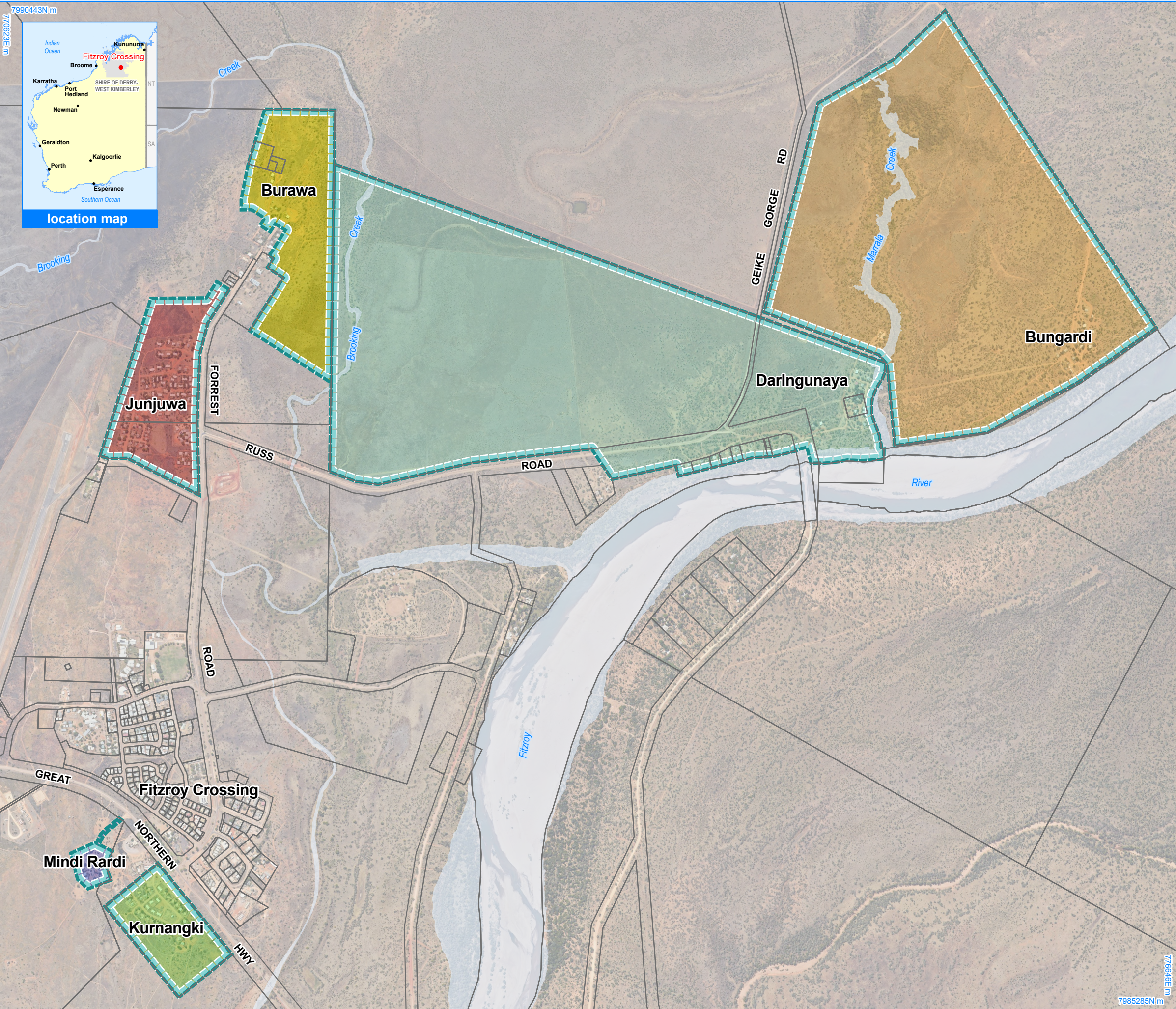
| | |
|--|--------------------------|
| crown reserve | |
| crown reserve | - Aboriginal Lands Trust |
| Department of Biodiversity, Conservation & Attractions managed | |
| freehold | |
| leasehold | |
| other | |
| pastoral lease | |
| pastoral lease | - Aboriginal Lands Trust |
| unallocated crown land | |
| water reserve | |

Geodetic Survey Marks

| | |
|---|----------------------|
| ↑ | bench mark |
| ⊙ | standard survey mark |

Land Administration

| | |
|--|-----------------------------|
| | cadastre |
| | lodged cadastre |
| | recommended settlement zone |
| | settlement zone |
| | settlement layout (SL) lot |



Fitzroy Crossing Context Plan

Settlement

- Bungardi
- Burawa
- Darlingunaya
- Junjuwa
- Kurnangki
- Mindi Rardi

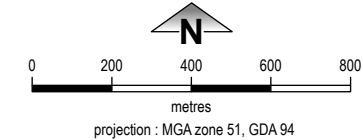
Land Administration

- cadastre
- recommended settlement zone

Features

- water body

This Context Plan is based on the following Layout Plans:
Bungardi LP1 Amd4
Burawa LP1 Amd4
Darlingunaya LP1 Amd7
Junjuwa LP1 Amd7
Kurnangki LP1 Amd5
Mindi Rardi LP1 Amd6



This Layout Plan does not constitute development approval. It is the responsibility of the developer to ensure that all relevant consents, approvals, licences and clearances are in place prior to commencing physical works on the site. Organisations responsible for such matters may include land owner, local government, incorporated community council, native title representative body, native title prescribed body corporate, Aboriginal Cultural Materials Committee, Environmental Protection Authority, state and federal government departments, and other relevant regulatory authorities. Go to the [PlanWA interactive planning map](#) to view Layout Plans with other spatial layers.

© 2023 Western Australian Land Information Authority Location information data licensed from Western Australian Land Information Authority (WALIA) trading as Landgate. Copyright in the location information data remains with WALIA. WALIA does not warrant the accuracy or completeness of the location information data or its suitability for any particular purpose. Base information and aerial imagery supplied by the Western Australian Land Information Authority SLIP 1447-2023-1. Cadastre date Oct 2024. August 2023 aerial image.

Map document : JunjuwaLP1_Amd7.aprx
Produced by Data Analytics, Department of Planning, Lands & Heritage on behalf of the Western Australian Planning Commission.
© Western Australian Planning Commission 2024

